



The **AutoNav™** control system is advanced and reliable due to its stable firmware and redundant IMU system. When adding it to one of our many RCV USVs your surveys become precise and repeatable.

BENEFITS

- ▶ Enables real-time monitoring of track lines
- ▶ Self-contained
- ▶ Compatible with Seafloor USV
- ▶ OA Adaptable

SPECIFICATIONS

Serial Ports 2 (GPS and Coms)

Range 800m with telemetry

Communications 900Mhz(868Mhz EU) / USB

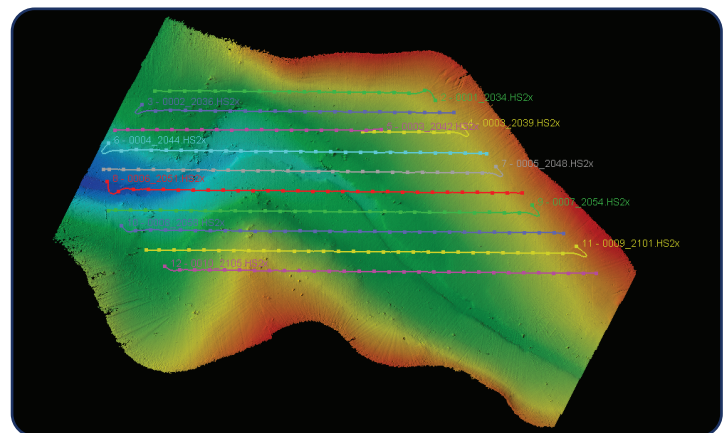
Environmental P 66

Size 11.5 x 3.5 x 6.5 in / 292 x 89 x 165 mm

Weight 3 lbs / 1.3 kg



Hydrone With AutoNav Addition



AutoNav Repeatable Accuracy

Seafloor Systems, Incorporated
4415 Commodity Way
Shingle Springs, CA 95682 | USA